

Confidence begins with *D'Elegance*[®]

WIN

**\$1,000 WORTH OF CONTOURING
LINGERIE VOUCHERS**

**20 READERS EACH GET A \$50 VOUCHER
+ \$38 CONSULTATION FREE**

Stand a chance to win a \$50 voucher when you write in to enquiry@stylez.com.sg with the subject header "D'Elegance" by 10 July. Include your name, age, occupation, IC number, address and contact no.

First in Singapore

Every woman dreams of having the perfect body. **D'Elegance Figure-Enhancing Lingerie** is the perfect solution for every woman and brings out your unique Asian beauty in three ways.

1 SHIFT

For many women, the real problem is not that they are "fat", but that they've been wearing the wrong kind of underwear, which forces "fat" to protrude out at the sides of the bust, hips or upper thighs. **D'Elegance Figure-Enhancing Lingerie** SHIFTS these "fats" back to the correct position for a more aesthetically pleasing silhouette.

2 SUPPORT

Besides the wrong size, you may be wearing underwear that look good but do not give you the adequate support or proper fit. Made of high quality material, **D'Elegance** lingerie are ergonomically designed and will give you the support needed for your unique body shape.

3 SECURE

Once your body has settled into the ideal lingerie mould, the "fat" burns and moves and is then "locked" into this mould, enabling the bust, waist and hips to be shaped correctly. Wearing **D'Elegance** lingerie regularly will shape the body such that the curves remain even after the lingerie is removed.

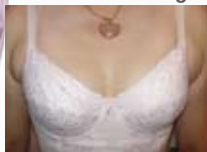
THE FEMALE BODY

Your desire for a perfect figure doesn't have to be a pipe dream. Specially designed **D'Elegance Figure-Enhancing Lingerie** is the ideal solution for woman who want to maintain a beautiful bustline, waistline, firm posterior and post-natal mothers who want to get back in shape. Wearing figure-enhancing lingerie while in shape will help you to retain your figure longer. If you are out of shape, wearing good quality figure-enhancing lingerie will help you to reshape your figure.

YOUR IDEAL FIGURE

Most women might feel that an ideal figure is shaped like a hourglass, big bust and a slender waist. A beautiful figure should observe the golden proportions of the Asian woman. **D'Elegance** takes the measurements of each customer and works out her ideal proportions based on the Golden Scale Map of the Ideal Figure and provide professional personalized consultation to each client and advise the lingerie that best suits the individual figure.

Readers get a better fit and sexier silhouette with D'Elegance



Before: Wearing the wrong cup size leads to excess fat from the back accumulated at the underarm area.



After: D'Elegance Lingerie with double layer tulle cutting at the sides shape the accumulated and excess fats around the underarms and the back towards the center of the cups, leading to a fuller bust.



Before: She was wearing the wrong bra that did not enhance her body shape, making her breasts look small and droopy instead.



After: D'Elegance Lingerie, with somatological cutting techniques help to lift the breasts to a perfect bustline.

D'Elegance[®]

10 Anson Road, #02-57/58,
International Plaza
Tel: 6226 3013
www.DElegance.com.sg

ABOUT D'ELEGANCE

Singapore's first figure-enhancing lingerie brand, **D'Elegance** produces lingerie that are ergonomically designed. Providing functionality, comfort and aesthetics, **D'Elegance** lingerie fits snugly but is not restrictive. In addition to providing professional products and services, **D'Elegance** seeks to set a new standard in the consumer culture of figure-enhancing lingerie and to educate consumers about body contouring.

Call 6226 3013 for a personalised consultation with D'Elegance to get into shape today